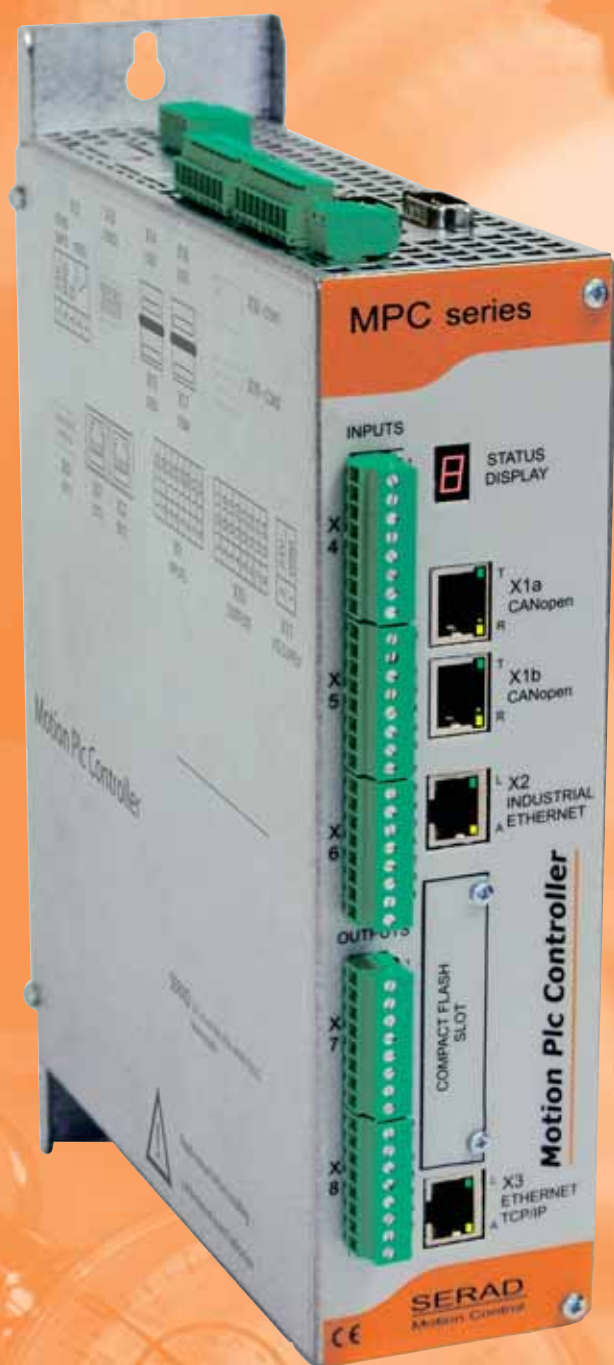


Motion Plc Controller **MPC Series**

Industrial PC for Automation



Motion

Automation

Industrial
PC

PLC
IEC 61131-3



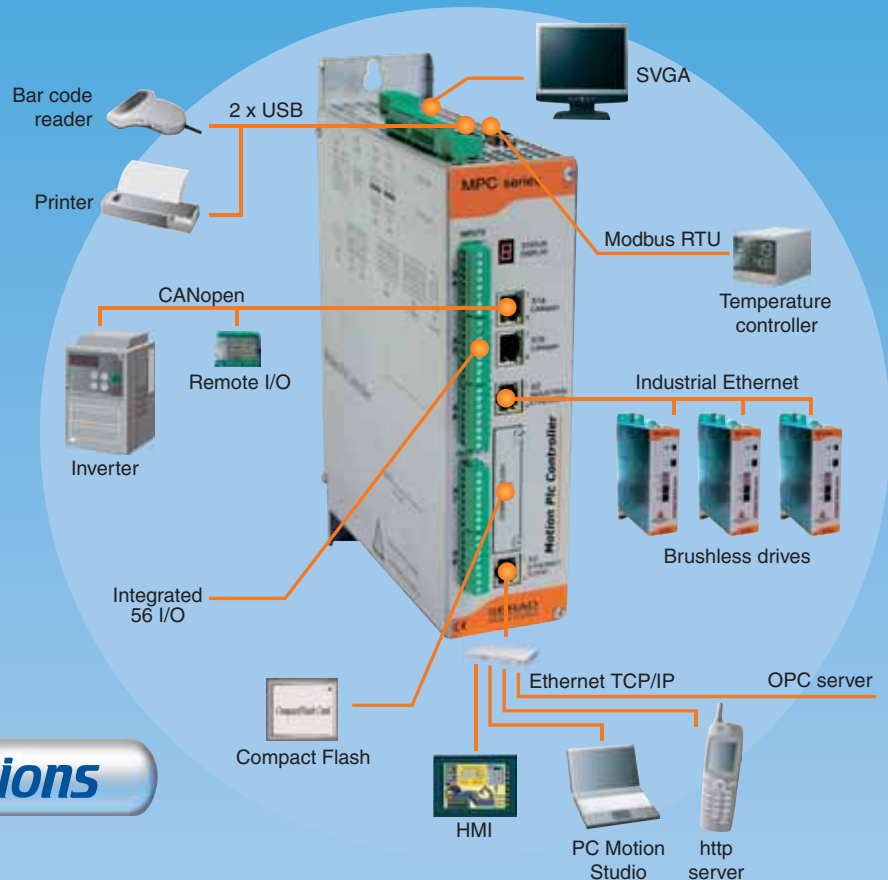
The solution for your motion control applications

MPC *PC power, PLC reliability*

Providing both high performance and outstanding flexibility, the **MPC** is the answer to a broad range of industrial applications.

The power of the **MPC** processor enables it to manage complex machines with a high update rate.

MPC takes advantage of all the PC communication interfaces and, in addition, provides an industrial Ethernet and a CANopen fieldbus port.



Advanced Motion Functions



- Fast and accurate positioning



- Electric gearbox with adjustable ratio



- CAM Profiles with dynamic phase adjustment



- Registration with 10 µs capture window



- CAM boxes



- Synchronization



- Virtual axes



- Linear, circular and helical interpolation

IEC 61131-3 PLC



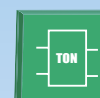
Supports the 6 languages of the IEC 61131-3 standard



• LD



• SFC



• FBD



• ST



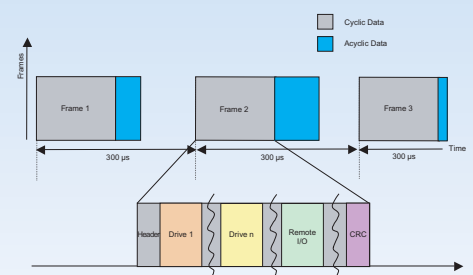
• IL



• CFC

Industrial Ethernet

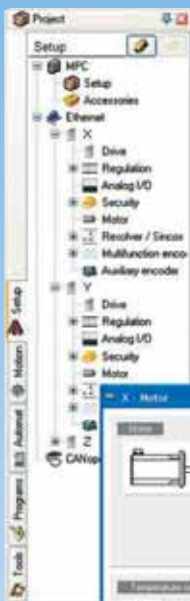
- 100 Mbit/s bus
- Real time and deterministic Ethernet
- Transfer of cyclic and acyclic data
- Jitter lower than 1 µs



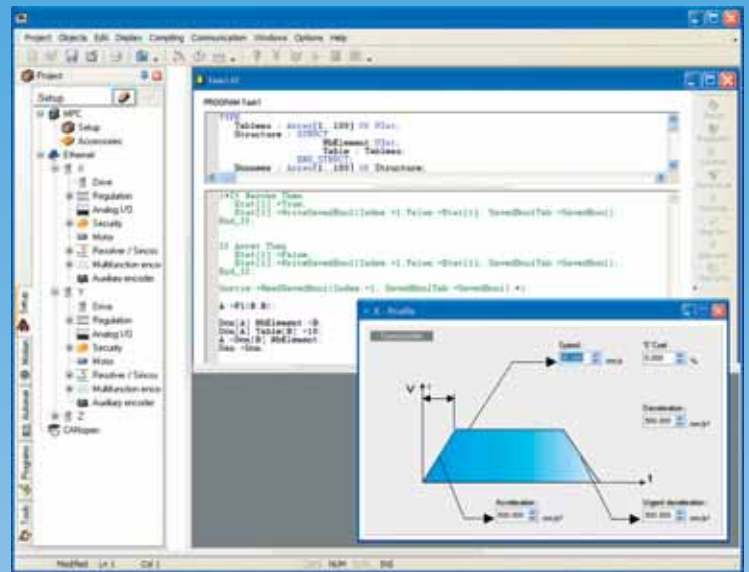
Motion Studio *Software workshop*

Thanks to its intuitive interface and its standardized language IEC 61131-3, the software workshop *Motion Studio* is extremely user-friendly and permits a rapid development of your application.

User-friendly



- Project management
- Simplified configuration using a tree structure
- Multi-window
- Graphic editors
- Floating menus
- Intuitive navigation
- Toolboxes
- Integrated help files



Fast development

- Editors with syntax description
- Creation of function blocks
- Choice program type and priority
- Cross references
- Definition of CAM profiles by graphic tool
- Easy declaration of axes, I/O and variables
- Alarm display
- Numerous integrated libraries



Setup tools

- Instrument display
- Trace mode and single step
- Breakpoints
- Axis auto-tuning
- Trajectory generators
- Motion simulator
- Hyper Terminal
- Variables watch list
- Animation tables
- Digital oscilloscope
- Network analyser





Advantages

- Axis controller, PLC and PC in the same box
- Open and evolutionary architecture
- Standardized Programming IEC 61131-3
- Easy to use
- Simplified wiring using digital data bus

Application Areas

- Label printing
- Packaging machines
- Textiles machines
- Press feeding
- Water jet cutters
- Pick and place robots
- Woodworking machines
- Flow regulation
- Dosing, etc.

Technical Features

Power supply	24 V DC \pm 20 %, 1.5A typical Galvanic isolation Tolerates momentary supply loss
Architecture	Intel Celeron® processor® 400 MHz Real time multi-tasking core Compact Flash memory 64 MB, Ram 64 MB RAM saved data memory 128 KB
Local inputs / outputs	MPCIO module* 32 inputs / 24 outputs - 24 V DC PNP inputs - 24 V DC PNP static outputs, 500 mA per output - LED state visualization
Communication	1 x ETHERNET TCP/IP 100 Mbit/s 1 x INDUSTRIAL ETHERNET 100 Mbit/s 2 x USB 1 x CANopen 1Mbit/s 1 x RS232, 1 x RS232 / RS485
WatchDog	Relay : N/O contact
Diagnostic	STATUS display
Advanced Motion Functions	Fast and accurate positioning Electronic gearbox with adjustable ratio CAM Profiles with dynamic phase adjustment Compensation and superposition movement functions Linear, circular and helical interpolation Registration CAM boxes
Dimensions w x h x d	66 x 283 x 198
Operating temperature	5 to 45 °C

* option

A company of Controlway Group

CONTROLWAY

全国办事处

北京	西安	长春	青岛
上海	天津	沈阳	杭州
广州	长沙	大连	宁波
苏州	成都	济南	深圳
南京	重庆	柳州	厦门
无锡	昆明	南昌	
郑州	武汉	烟台	

苏州科瑞力摩电机有限公司

地址：苏州吴中区马夏路585号

电话：0512-6724 2858-6901

传真：0512-6724 2868

手机：13776269231

Suzhou Controlway Motion Control Co., Ltd.

Add/ No. 585, Maxia Road, Wuzhong District, Suzhou, China

TEL / 0512-6724 2858-6901

FAX / 0512-6724 2868

MOB / 13776269231

科瑞力摩®

Motion Control